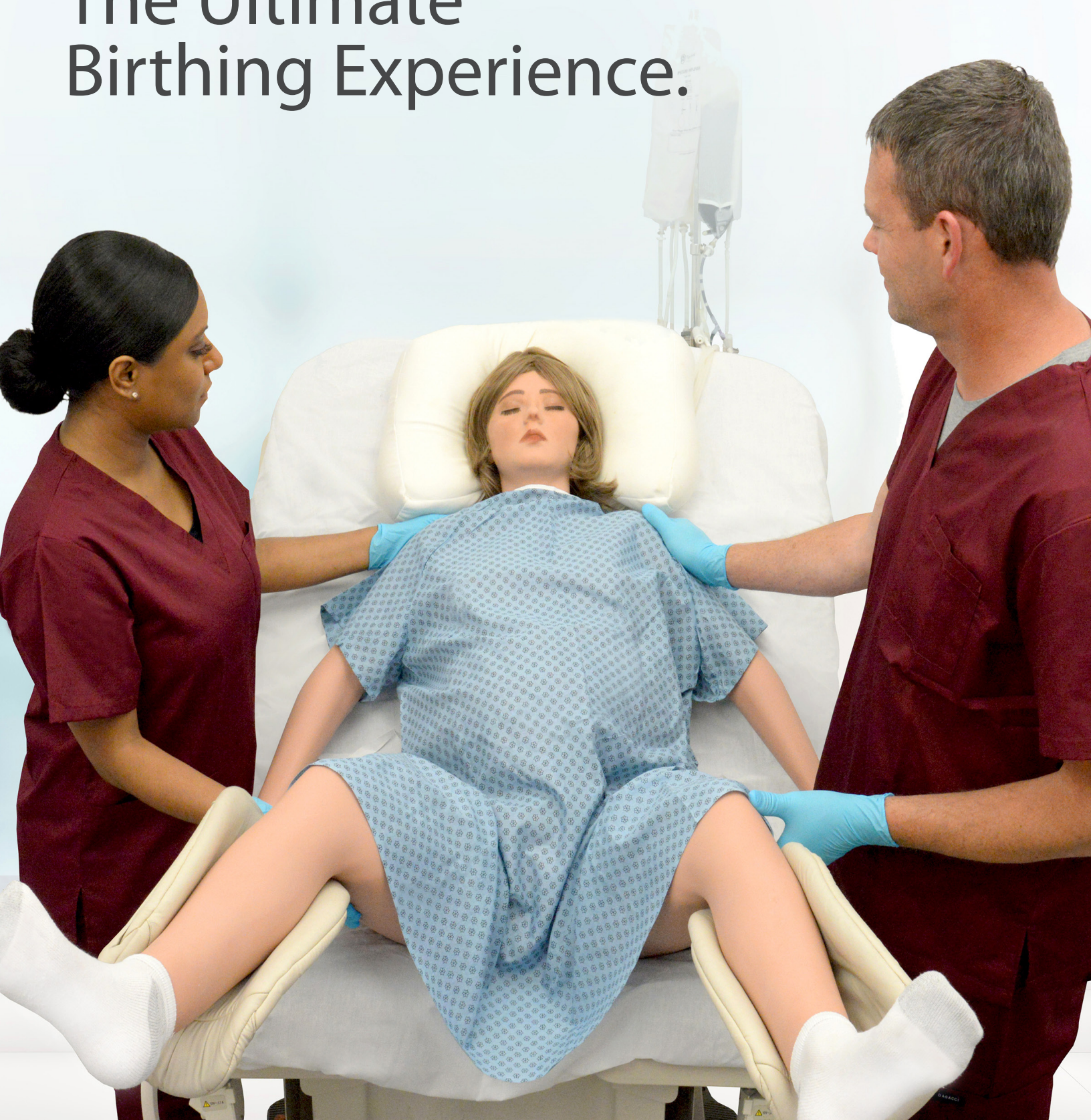


Operative Experience

Vaginal Delivery Simulator

RealMom

The Ultimate Birthing Experience.



Introducing RealMom 2.0

The world's most lifelike birthing simulator just got even better.

RealMom 2.0 is the latest generation of the world's most lifelike vaginal birthing simulator and now comes packed with new features and improved performance that make training with RealMom as close as it gets to a real patient in the labor and delivery room.



Lifelike Touch and Feel

Improved silicone-based soft tissue and skin provide incredible "life-identical" realism



Superior Movement and Flexibility

Advanced internal skeletal structure provides accurate movement and flexibility of body and limbs



Improved Performance

All-new, replaceable birth canal offers limitless, ultra-realistic deliveries



Enhanced Range of Deliveries

Full range of deliveries including breech, shoulder dystocia, cord prolapse, forceps and vacuum assist



Practice Multiple Birthing Positions

The only delivery simulator with the capability to perform upright, side-lying and other birthing positions



More Skin Tone Options

Available in a range of realistic skin tones including African-American, Asian and Caucasian



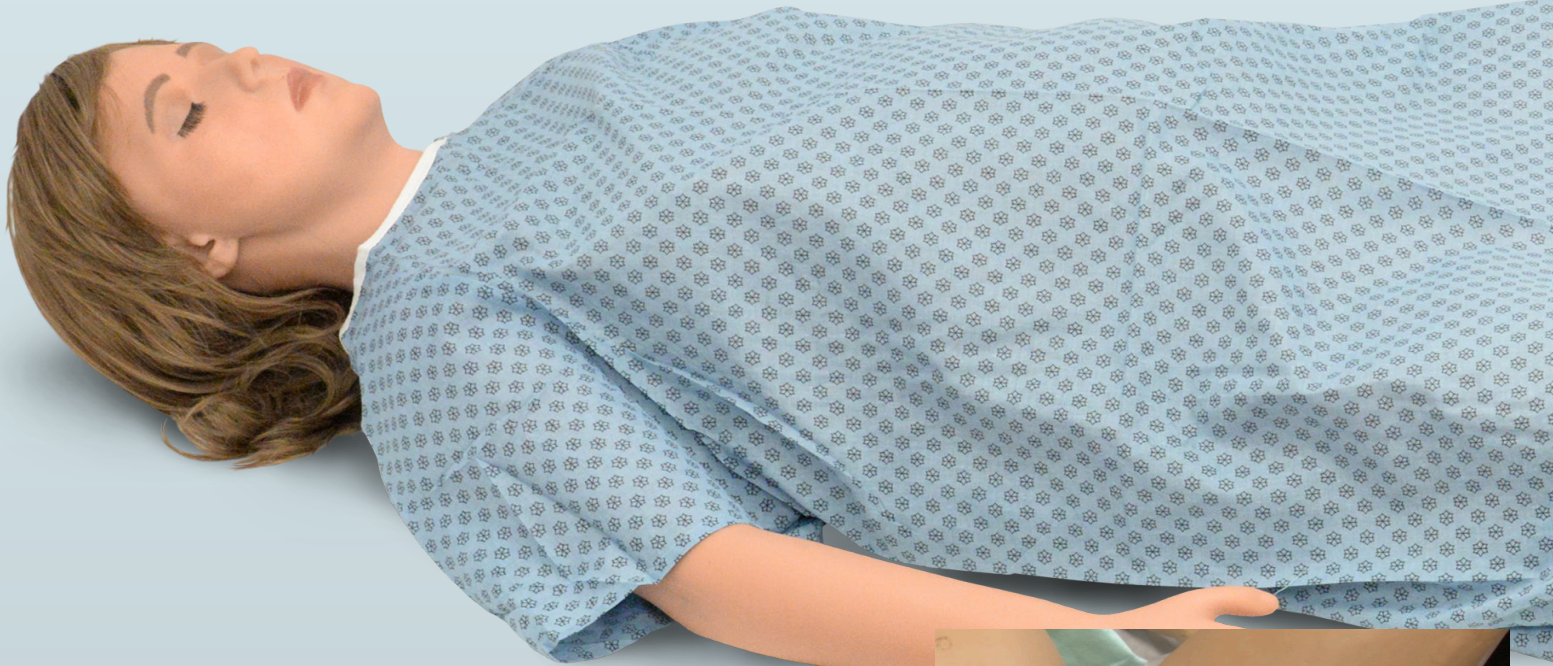
RealMom™ Core Features

Everything you need.
Nothing you don't.



Lifelike Mother and Baby

Wireless, full-body female simulator and full-term baby with unsurpassed realism and lifelike appearance. Features natural-feeling soft tissue and accurate internal anatomy with easy-to-feel landmarks and authentic pelvic structure. Available in Caucasian, Asian and African-American skin tones.



Postpartum Hemorrhage

Realistic postpartum hemorrhage control with appropriate flow control and the ability to effectively stop hemorrhage with a Bakri or Ebb Balloon.



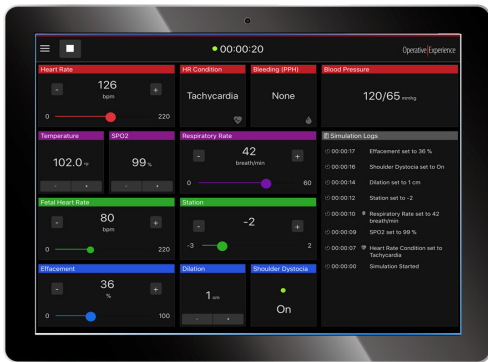
Natural Delivery

First-in-the-world natural delivery with active, soft tissue birth canal. Provides human-like, real-time dilation and fetal station with massageable fundus and amniotic reservoir. Simulates lifelike uterine contractions. Also includes a fully-realistic uterus, placenta and umbilical cord.



Fully Operable

Provides normal delivery, breech, shoulder dystocia, nuchal cord, cord prolapse, transverse and placenta previa, compound delivery, and operative delivery with forceps or vacuum devices.



Tablet Control

Instructor control of dilation and fetal station. Physiological presentation and control of maternal and fetal heart rate, heart tones and contractions, pulses, blood pressure and SPO₂. Supports iOS, Android and any computer browser.



Simple and Affordable

More affordable than other competitive birthing simulators and with no complicated programming or set-ups so there's no simulator downtime.

RealMom™ and C-Celia Emergency C-Section Simulator

A complete and fully-integrated
birthing experience.



Childbirth is a precious moment for mother and baby but when things do go wrong a prepared delivery team can mean the difference between life and death. It's critical that your learners train for and are prepared for any eventuality in the labor and delivery room.

Combine the **RealMom vaginal delivery simulator** and the **C-Celia Emergency Obstetric simulator**, and you can provide a fully integrated and complete birthing experience for your learners — from natural deliveries to fully-operative emergency c-section and postpartum hemorrhage control.

Technical Specifications



Standard Equipment

Full-body, wireless female manikin
65" H x 23.6" W x 11" D
(165 cm x 60 cm x 28 cm); 130 lbs (59 kg)

Full-term, wireless baby manikin
10" H x 5" W x 7" D (25.4 cm x 12.7 cm x
17.78 cm); 6.3 lbs (2.85 kg)

Instructor control interface tablet

Instructor control interface software
and license

Touchscreen Patient Monitor

Virtual monitor software

Electrical: Input 110v

Standard Features

Delivery

Realistic natural delivery system

Massageable fundus

Normal delivery

Breech

Shoulder dystocia- MacRoberts
Maneuver

Compound delivery

Leopold maneuvers

Assisted delivery with forceps or
vacuum devices

Realistic placenta with umbilical cord

Ability to present with complications:

- Nuchal cord
- Cord prolapse
- Placenta previa
- Retained fragments

Mother heart rate [0 -220] with presets:

- Normal
- Tachycardia
- Bradycardia
- Palpable

Fetal heart rate 0-220

Bleeding presets:

- Off
- Normal
- Impressive
- Maximum

Respiratory rate [0 – 60]

Cervical effacement, dilation and station

Ability to control delivery speed

Shoulder dystocia control

Blood pressure

SPO₂

Temperature

Postpartum

Realistic postpartum hemorrhage

Ability to effectively stop hemorrhage
with a Bakri and Ebb Balloon

Operative | Experience